

# Navigation Map of Bulgaria

## Including OFFRoadMap (OFRM) by OFFRoad-Bulgaria.com

### Version 5.00

The purpose of this map is to provide accessible, accurate and up-to-date information for your GPS devices. Despite all efforts made by the creators to achieve this goal, the roads and the data included in this digital map are intended to be used as a guidance only and should not be used solely for navigation. The creators of this map make no warranty as to the accuracy or completeness of the map data. In no event will the creators of this map be liable for any damages whatsoever, including but not limited to loss of revenue or profit, lost or damaged data, and expenses, arising in any way from or consequential upon the use of, or the inability to use this digital map.

#### Contents:

- Registering your map (required for the two-year's free data update subscription)
- Usage details
- OFRM Geotrade v5.00 variants
- Coverage

#### >>>> REGISTRATION <<<<

Please send an e-mail to [karta@offroad-bulgaria.com](mailto:karta@offroad-bulgaria.com) with the following details: **your full name, place of residence, phone number for contact, GPS product model, 25-symbol map serial number.** To obtain the 25-symbol serial number, connect your GPS device to your computer via USB cable. If you bought a device with preloaded OFRM map, you will find the serial number in file "serial.txt" in the root folder of your device's internal memory or in the file "gmapsupp.unl" in folder "Garmin" of your device's internal memory. If you bought this map on SD memory card, you will find the serial number in file "serial.txt" in the root folder of your SD memory card or in file "gmapsupp.unl" in folder "Garmin" of your SD memory card. Please make sure you have

sent all necessary details for your registration, as this process activates the included 2-year free subscription for map updates.

All registered customers will receive map updates by e-mail free of charge for a period of two years, starting from the date of registration. Customers can also get updates installed at our company store, where installation fee will be charged.

## >>>> USAGE DETAILS <<<<

In this section of the manual we would like to introduce you to the specifics of this map and to help you get the most out of it. We are assuming that you already have read and are familiar with your GPS receiver's manual, where all the standard features of map products are explained (e.g. searching, recording tracks, etc.). If you have any questions regarding your receiver, please contact your dealer, or ask for help in our forum at the following address:

<http://karta.OFFRoad-Bulgaria.com>.

Here you will find the basic search categories in the map for the **Garmin nüvi** line of products. For other models, respective search features are used. Both latin and cyrillic alphabets are supported (your device has to support cyrillic as well to be able to use the product in cyrillic). When you use latin alphabet, please refer to the transliteration rules provided below.

Searching for a city or residential district: “Where To?” > “Cities” > “Spell”. Enter the name of the city/residential district without the specific abbreviations like “gr.”, “s.”, “kv.”, “zhk”, etc.

Searching for address: “Where To?” > “Address” > “BULGARIA” > “Spell City” > “Enter Street” > “Enter House Number”. The feature “Search All” in the city selection screen allows you to search for an address in all cities in Bulgaria for which house numbers data is available.

Searching for a street intersection: “Where To?” > “Intersections” > “BULGARIA” > “Spell City” > “Enter Street 1” > “Enter Street 2”. If an intersection of the two streets is found, you can view it on the map by touching the “Show Map” button.

Searching for a block of flats (blok): “Where To?” > “Points of Interest” > “Spell Name” > “BL xxx yyy” (spaces included), where xxx is the block’s number and yyy is the name of the residential district (e.g. BL 24 BOROVO). In cases where the block has a name instead of a number (e.g. bl.Murgash), xxx is the block’s name and yyy is name of the residential district or sometimes the adjacent street name. All specific abbreviations like “ul.”, “bul.”, “kv.”, “zhk”, etc. are omitted (e.g. BL MURGASH VASIL LEVSKI). The results list will be sorted by proximity and separate entrances to the block building (e.g. VH.A) will be provided in front where data is available.

Searching for Points of Interest (POI): “Where To?” > “Points of Interest” > “Spell Name” > (select category). The result list will be sorted by proximity. If you’re searching for a POI without knowing the category it belongs to, just enter its name in “Spell Name”, and searching will include all categories, although the search itself will take considerably longer time. When searching for lakes or dams, enter the name without specific abbreviations like “ez.” or “yaz.”

“100 National Tourist sites”, defined by the Bulgarian Tourist Union: “Where To?” > “Points of Interest” > “Spell Name” > “BTS xxx yyy”, where xxx is site number & yyy is its name (e.g. 061 NDK). To locate the nearest sites, enter only “BTS”.

You can use “WiFi” as a keyword when searching for POIs to find restaurants, bars and other public places that offer Wireless Internet connection.

Due to limitations of Garmin’s map format, some POI types are not searchable using cyrillic alphabet. If you cannot find a POI using cyrillic, try searching it by entering its name using latin alphabet instead, by following the transliteration rules provided below.

### **How to transliterate Bulgarian geographic names when searching.**

A = A	Е = E	К = K	Π = P	Φ = F	Щ = SHT
Б = B	Ж = ZH	Л = L	Р = R	Х = H	Ъ = A
В = V	З = Z	М = M	С = S	Ц = TS	Ь = Y
Г = G	И = I	Н = N	Т = T	Ч = CH	Ю = YU
Д = D	Й = Y	О = O	У = U	Ш = SH	Я = YA (ИЯ = IA)

## Compatibility with different Garmin receivers.

Since this map incorporates the latest technologies from Garmin, it is possible that you may have to update your GPS receiver software. You can do that by installing the program WebUpdater, which is available for download at Garmin's website:

<http://www.garmin.com/products/webupdater/howtoinstall.jsp>

One useful indication that your GPS software needs updating is when your receiver turns off by itself.

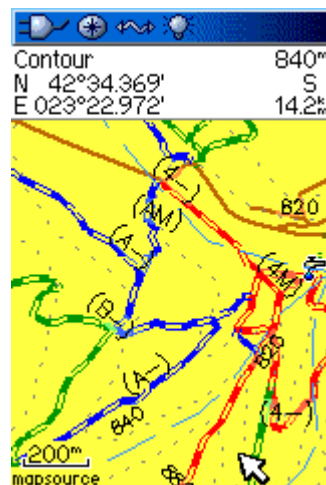
**If you have a preloaded Garmin map in your device (e.g. City Navigator Europe), we recommend that you disable it while using OFRM Geotrade map!**

### Offroad specifics of the map.

This map also includes unpaved roads and trails, which are visualized with color-coded line stipple.

More information about offroad functionality (in bulgarian language):

<http://forum.offroad-bulgaria.com/showthread.php?t=7669>



>>>> **OFRM Geotrade v5.00 variants** <<<<

For your convenience we have created several different variants of the map. Each of the variants listed below can be requested free of charge by e-mail, if you consider it will better serve your needs, and you'll receive a free download link to it. You can check which variant you are currently using by entering the "Map" subsection of your GPS device's setting menu (for **Garmin nüvi** series go to "Tools" > "Settings" > "Map" > button "Map Info").

## STANDARD VARIANTS

**OFRM Geotrade v5.00 CYR** – this is the standard variant of the map, sold as a preloaded map on many GPS devices. This map should be used only on devices that have cyrillic support.

**OFRM Geotrade v5.00 LAT** – this map supports only latin charset. It should be used on devices that have no cyrillic support.

## LITE VARIANTS

**OFRM Geotrade v5.00 CYR LITE** – variant of **OFRM Geotrade v5.00 CYR** without countrywide forest and plant coverage.

**OFRM Geotrade v5.00 LAT LITE** – variant of **OFRM Geotrade v5.00 LAT** without countrywide forest and plant coverage.

## VARIANTS WITH CONTOUR LINES

**OFRM Geotrade v5.00 CYR 25** – variant of **OFRM Geotrade v5.00 CYR** with contour lines at 25 m interval.

**OFRM Geotrade v5.00 LAT 25** – variant of **OFRM Geotrade v5.00 LAT** with contour lines at 25 m interval.

## TOPOGRAPHIC VARIANTS

**OFRM Geotrade TOPO v5.00 ML** – this map contains topographic details. It is intended mainly for the Colorado line of products, but it can be used as well with series 60C, 76C and Etrex mapping handhelds. This variant supports both latin and cyrillic charsets. Due to a limitation of Garmin's NT map format some POI types are not bilingual and those are not searchable using cyrillic alphabet.

**OFRM Geotrade TOPO v5.00 CYR** - This variant supports only cyrillic charset and is intended for the newer models of the *nüvi* series (205, 215, 255, 265, 765, 860 and 5000 models).

**OFRM Geotrade TOPO v5.00 LAT** - This variant supports only latin charset and is intended for the models without cyrillic support.

### TOPOGRAPHIC VARIANTS WITH CONTOUR LINES

**OFRM Geotrade TOPO v5.00 CYR 25** - variant of **OFRM Geotrade TOPO v5.00 CYR** with contour lines at 25 m interval.

**OFRM Geotrade TOPO v5.00 LAT 25** - variant of **OFRM Geotrade TOPO v5.00 LAT** with contour lines at 25 m interval.

### >>>>    **COVERAGE**    <<<<<

OFRM Geotrade includes more than 5300 urban and rural settlements, which are searchable through category “Cities”. For most of the major cities and for some smaller towns there is detailed information available on street grid level.

**Street and intersection search is available in the following urban and rural settlements:**

Aytos, Asenovgrad, Asparuhovo, Aheloy, Ahtopol, Balchik, Balsha, Bankya, Bansko, Batak, Belogradchik, Berkovitsa, Bistritsa, Blagoevgrad, Bozhurishte, Botevgrad, Botunets, Burgas, Busmantsi, Buhovo, Byala Slatina, Varna, Veliko Tarnovo, Velingrad, Vidin, Vinitza, Vladaya, Voynegovtsi, Voluyak, Vratsa, Gabrovo, Galata, Gara Elin Pelin, German, Gorna Oryahovitsa, Gorni Bogrov, Gotse Delchev, Daskalovo, **Devnya\***, Dimitrovgrad, Dimchevo, Dobrich, Dobroslavtsi, Dolni Bogrov, Dolni Pasarel, Dolno Ezerovo, Dropla, Dryanovo, Dupnitsa, Elin Pelin, Elhovo, Etropole, Zheleznitsa, Zhelyava, Zhiten, Zidarovo, Zlatograd, Ivanyane, Izvor, Iztok, Isperih, Ihtiman, Kableshkovo, Kavarna, Kazanlak, Kazichene, Kamenar, Karlovo, Karnobat, **Kermen\***, Kiten, Klisura, **Knezha\***, Kozloduy, Kokalyane, **Kostenets\***, Kostinbrod, Kraymorie, Kranevo, Kremikovtsi, Krivina, Krivodol, Kubratovo, Kardzhali, Katina, Kyustendil, Levski, Lovech, Lozen, Lozenets, Lozovo, Lokorsko, Lom, **Lyubimets\***, Malo Buchino, Marinka, Mezdra, Mirovyane, Montana, Mramor, Marchaevo, Negovan, Nesebar, Nikolaevo, Nova Zagora, Novi Iskar, Novi han, Obzor, Obrochishte, Pavlikeni, Pazardzhik, Panagyurishte,

Pancharevo, Pernik, Petrich, Peshtera, Pirdop, Pleven, Plovdiv, Podgumer, Polski Trambesh, Pomorie, Pravets, Primorsko, **Parvomay\***, Ravda, Ravna gora, Ravno pole, Radova mahala, Radomir, Razgrad, Razlog, **Rakovski\***, Rogachevo, Roman, Rosen, Ruse, Samokov, Sandanski, Sarafovo, Sveti Vlas, Svetovrachene, Svilengrad, Svishtov, Sevlievo, Senokos, Seslavtsi, Silistra, Slavovitsa, Sliven, Smolyan, Sozopol, Sokolovo, Sofia, Stara Zagora, Tvarditsa, Teteven, Topolovgrad, Trakata, Trebich, Troyan, Tryavna, Targovishte, **Harmanli\***, Haskovo, Tsarevo, Tsarichino, Chelopechene, Chepelare, Chepintsi, **Cherven bryag\***, Chernomorets, Chirpan, Shumen, Yambol, Yana and more.

### **Searching by address is in the following urban and rural settlements:**

**Asenovgrad\***, Asparuhovo, Ahtopol, Balsha, Bankya, Belogradchik, Bistritsa, Blagoevgrad, Botunets, Boyana, Bunkera, Burgas, Busmantsi, Buhovo, Varna, Veliko Tarnovo, Vidin, Vinitza, Vladaya, Voynegovtsi, Voluyak, Vratsa, Gabrovo, Galata, Gara Elin Pelin, German, Gorna banya, Gorni Bogrov, Gotse Delchev, Daskalovo, Dimitrovgrad, Dobrich, Dobroslavtsi, Dolni Bogrov, Dolni Pasarel, Dragalevtsi, Elin Pelin, Etropole, Zheleznitsa, Zhelyava, Zhiten, Ivanyane, Iztok, **Ihtiman\***, Kazanlak, Kazichene, Kiliite, Kinotsentara, Klisura, Knyazhevo, Kokalyane, **Kostenets\***, Kremikovtsi, Krivina, Kubratovo, Kardzhali, Katina, Kyustendil, Lovech, Lozen, Lokorsko, **Lyubimets\***, Malinova dolina, Malo Buchino, Mirovyane, Montana, Mramor, Marchaevo, Negovan, Nesebar, Novi Iskar, Novi han, Pazardzhik, Pancharevo, Pernik, Petrich, Pleven, Plovdiv, Podgumer, Polski Trambesh, Pravets, **Parvomay\***, Ravno pole, Razlog, **Rakovski\***, Ruse, Sandanski, Svetovrachane, Seslavtsi, Silistra, Simeonovo, Sliven, Sofia, Stara Zagora, Suhodol, Teteven, Trebich, Filipovtsi, **Harmanli\***, Haskovo, Tsarevo, Chelopechene, Chepintsi, Shumen, Yambol, Yana and more.

### **Searching by blocks of flats is available in the following urban and rural settlements:**

Asparuhovo, Balchik, Belogradchik, Bozhurishte, Botevgrad, Botunets, Boyana, Burgas, Buhovo, Varna, Veliko Tarnovo, Vidin, Vratsa, Gabrovo, Gorna banya, Dimitrovgrad, Dobrich, **Ihtiman\***, Kazanlak, Knyazhevo, Kozloduy, **Kostenets\***, Kostinbrod, Kremikovtsi, Kardzhali, Kyustendil, Lovech, Meden rudnik, Montana, Nova Zagora, Novi Iskar, Pazardzhik, Petrich, Pleven, Plovdiv, **Razgrad\***, Ruse, Samokov, Sandanski, Svetovrachane, **Sevlievo\***, Silistra, Sliven, Sofia, Stara Zagora, Suhodol, Teteven, Targovishte, Filipovtsi, **Harmanli\***, Haskovo,

Chirpan, Shumen, Yambol, Yana and more.

(\* - new in v5.00)

**DO NOT FORGET TO REGISTER YOUR OFRM MAP AS DESCRIBED IN CHAPTER  
“REGISTRATION” OF THIS MANUAL IN ORDER TO ACTIVATE THE INCLUDED  
TWO-YEAR SUBSCRIPTION TO FREE OFRM UPDATES.**

**[karta@offroad-bulgaria.com](mailto:karta@offroad-bulgaria.com)**

We apologize for the inconvenience of not being able to offer telephone support.  
Please, read carefully this manual and if you have a problem, send us an e-mail.